



Be Faster... Safer & Cleaner



GAUSSIN is specialized in the auditing of handling procedures and the production of wheeled Non Road Mobile Machinery (NRMM) systems for handling and transportation of heavy, large or delicate loads.

ACM 40' 35T
Technical Description VDG03940

07/04/17

Founded over a hundred years ago, GAUSSIN, with more than 50,000 handling vehicles across the world, enjoys a strong reputation in the four booming markets of Energy, Transport, the Environment and Raw Materials.

Gaussin is public listed on NYSE EURONEXT Marché Libre since July 2006.



DUBAI ■ GAUSSIN MIDDLE EAST L.L.C. - Po Box 28171 ■ DUBAI, UAE ■ Tel. +971 506 951 170 ■ Fax +971 488 59 591

FRANCE ■ 11 rue du 47 RA, 70400 HÉRICOURT ■ Tel. +33 (0)3 84 46 13 45 ■ Fax +33 (0)3 84 56 78 88

infos@gaussin.com ■ www.gaussin.com

For any inquiry related to this product please contact:

Mr Peter Doggett
Managing Director, Shad Group. U.K.
Tel: +44 (0)1704 898900
e-mail: peter@shadgroup.co.uk
web: www.shadgroup.co.uk

ACM 40 35T Container mover.
See below full machine specification:



U-Shape ACM Automotive Container Mover



For any inquiry related to this product please contact:
Mr Peter Doggett
Managing Director, Shad Group. U.K.
Tel: +44 (0)1704 898900
e-mail: peter@shadgroup.co.uk
web: www.shadgroup.co.uk

Evolution of the product since 1999

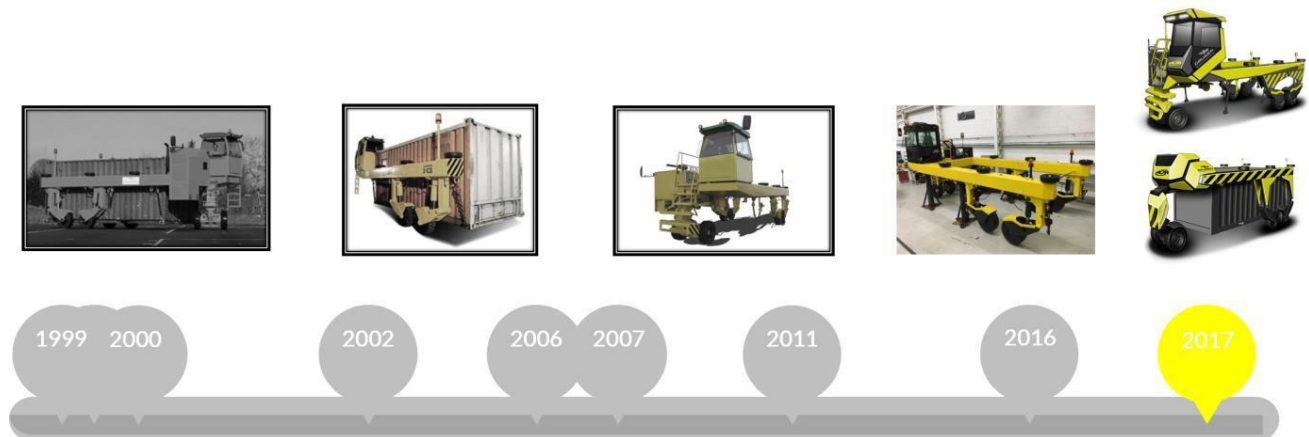


Table of contains:

Description	6
Capacity.....	6
Tare weight:.....	6
Speed.....	6
Dimensions.....	6
Chassis.....	6
Front undercarriage	6
Rear undercarriage:	7
Guidance.....	7
Fittings.....	7
Combustion engine.....	7
Battery	7
Fuel tank	7
Brakes:.....	7
Hydraulic circuit.....	7
Hydraulic tank	8
Signals	8
Driving cabin.....	8
Control:	8
Safety.....	9
Painting	9
Contact for inquiry	10

Description: The automotive container mover is designed for transporting, handling and lifting ISO 20' & ISO 40' containers on industrial premises and external courtyards.
A customized version for other dimensions of containers can be developed.

Capacity: 35,000 kg

Tare weight: 18,000 kg

Speed: 0 to 10 km/h max on flat ground.

Dimensions: Useful length: c.a. 12.200 mm
Total length: c.a. 14.450 mm
Useful width: c.a. 2.585 mm
Total width: c.a. 3.660 mm
Height: c.a. 3.644 / 4.174 mm
Stroke: c.a. 530 mm

Chassis:

- Tubular frame in electrically welded S355 steel profiles
- 2 wheels with polyurethane tyres at the end of where the container is held
- Mudguard to protect wheels from splash
- Locking bar and the rear of the chassis with a hydraulic cylinder for fastening

Front undercarriage

Front steering undercarriage and motor composed of:

- Pivoting support with compass mounted onto ball bearing with hydraulic lifting cylinder
- 2 hydraulic motors with built-in brake
The front axle oscillates laterally to ensure permanent contact with the ground
- 2 front semi-elastic wheels, type PPS 355/50-20 (Ø828x307mm)
- 1 double-acting hydraulic steering cylinder, with connecting rods
- 1100mm drawbar with 40mm-diameter eye for use in the event of the motor breaking down

Rear undercarriage:

Rear undercarriage composed of:

- 4 supports/compass supports, each equipped with a hydraulic lifting cylinder
- 4 wheels equipped with PPS 465/55-20 (Ø1.029x465mm)

Guidance:

10 guidance wheels to facilitate the introduction of the self-propelled transporter around the container

Fittings:

6 manual twist locks for the container with supporting chains and storage compartment for an ISO 20' container or an ISO 40' container. Or as an option fully hydraulic operated twist locks.

Combustion engine:

Diesel motor, 4 2.9-litre cylinders onto which 3 hydraulic pumps are attached.

55.4 kW @ 2600 rpm, 260 Nm @ 2600 rpm

A variable displacement axial piston hydraulic pump supplies the hydraulic power to the hydraulic motors.

Two gear pumps supply the hydraulic power for the lifting, steering and cooling.

Battery:

24 volt DC is supplied by two 12V 100Ah batteries connected in series, automatically recharged by the combustion engine's load circuit.

Fuel tank:

Capacity: 80 liters (EN 590 diesel)

Brakes:

The braking system includes:

- Hydrostatic service brake
- Parking brake (by reduction of pressure)
- Hydraulic emergency brake applied by the machine operator

Hydraulic circuit:

Hydraulic circuit composed of:

- 3 hydraulic pumps attached to the combustion engine
- 2 hydraulic motors with brakes on the front wheels for motion
- The hydraulic circuit is made using flexible, rigid tubes, in order to ensure that it connects with the pumps, hydraulic motors and lifting cylinders.
- 5 double acting hydraulic cylinders used for lifting, equipped with



For any inquiry related to this product please contact:

Mr Peter Doggett
Managing Director, Shad Group. U.K
Tel: +44 (0)1704 898900
e-mail: peter@shadgroup.co.uk
web: www.shadgroup.co.uk

anti-return

safety

valves

- Protective

'parachute'

valves at

the top of

the

cylinders,

which are

kept in

position

using

counterbala

nce valves

- 1 double acting hydraulic
steering cylinder

- 1 double acting hydraulic
cylinder for locking

Hydraulic tank: Capacity: 100 liters (TOTAL EQUIVIS ZS 46)

Signals:

- 4 beacons (2 front / 2 rear on supporting base)
- 2 working lights on the front
- 2 working lights on the back of the cabin

Driving Cabin: Standard ergonomic “DESIGN” cabin (door on the right) with central stair access and safety handrails, including:

- 1 controllable driver’s seat
- 1 steering wheel with double acting orbitrol steering unit
- 1 accelerator pedal
- 1 control panel
- 1 multifunction display
- Left and right mirrors
- Front/rear windscreen wipers with windshield fluid
- 1 ventilation system
- 1 air conditioning system
- 1 heater
- 1 embedded and secured electrical box

Control: The control panel includes:

- 1 emergency stop
- 1 ignition key
- 1 forward/neutral/reverse switch
- 1 “slow speed / High speed” switch
- 1 “UP” button
- 1 “DOWN” button
- 1 “LOCK” button for lock the locking bar
- 1 “UNLOCK” button for unlock the locking bar
- 1 light indicator “fault” button
- 1 “power on” indicator
- 1 “battery charging” indicator
- 1 “reset” push-button
- 1 audible warning device

Safety:

- 1 80dB(A) buzzer for reverse movement
- 1 emergency stop
- 1 klaxon
- Yellow and black stripes on 4 corners
- Spark arrestor exhaust system
- 1 battery master switch

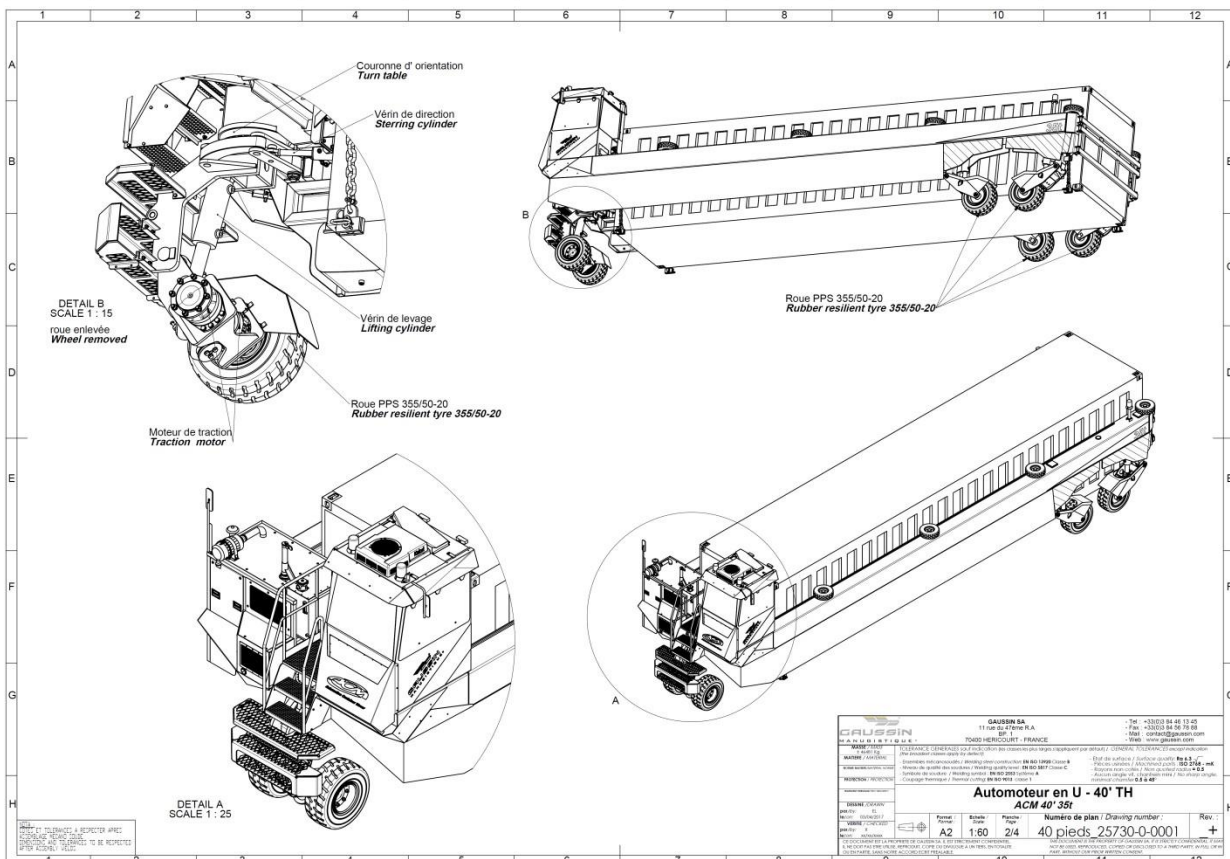
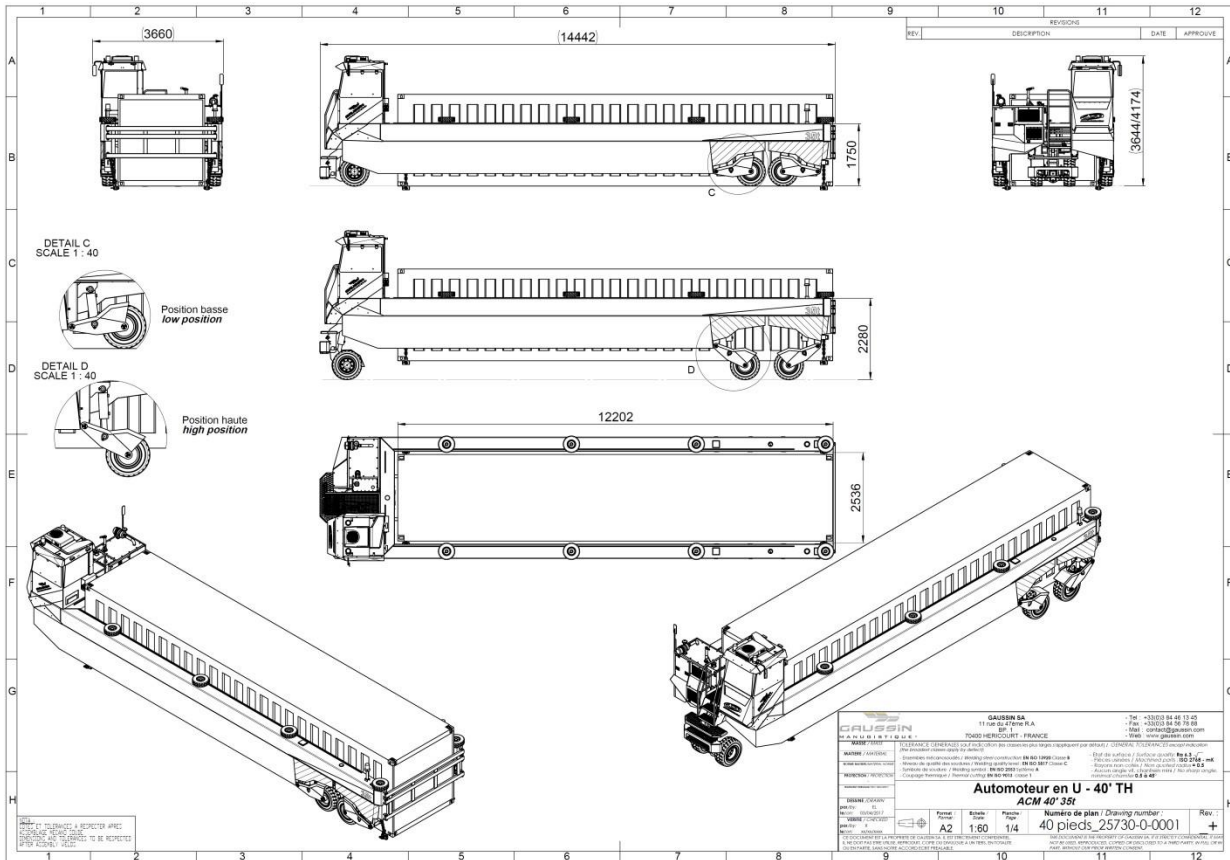
In line with safety regulations, the handling equipment is either:

- 1.10 dynamic load
- 1.25 static load

Painting:

- Shot-blasting, dust removal and degreasing
- Zinc epoxy anti-rust primer
- 2 coats of polyurethane finishing paint
- RAL 1021 yellow
- CE marking

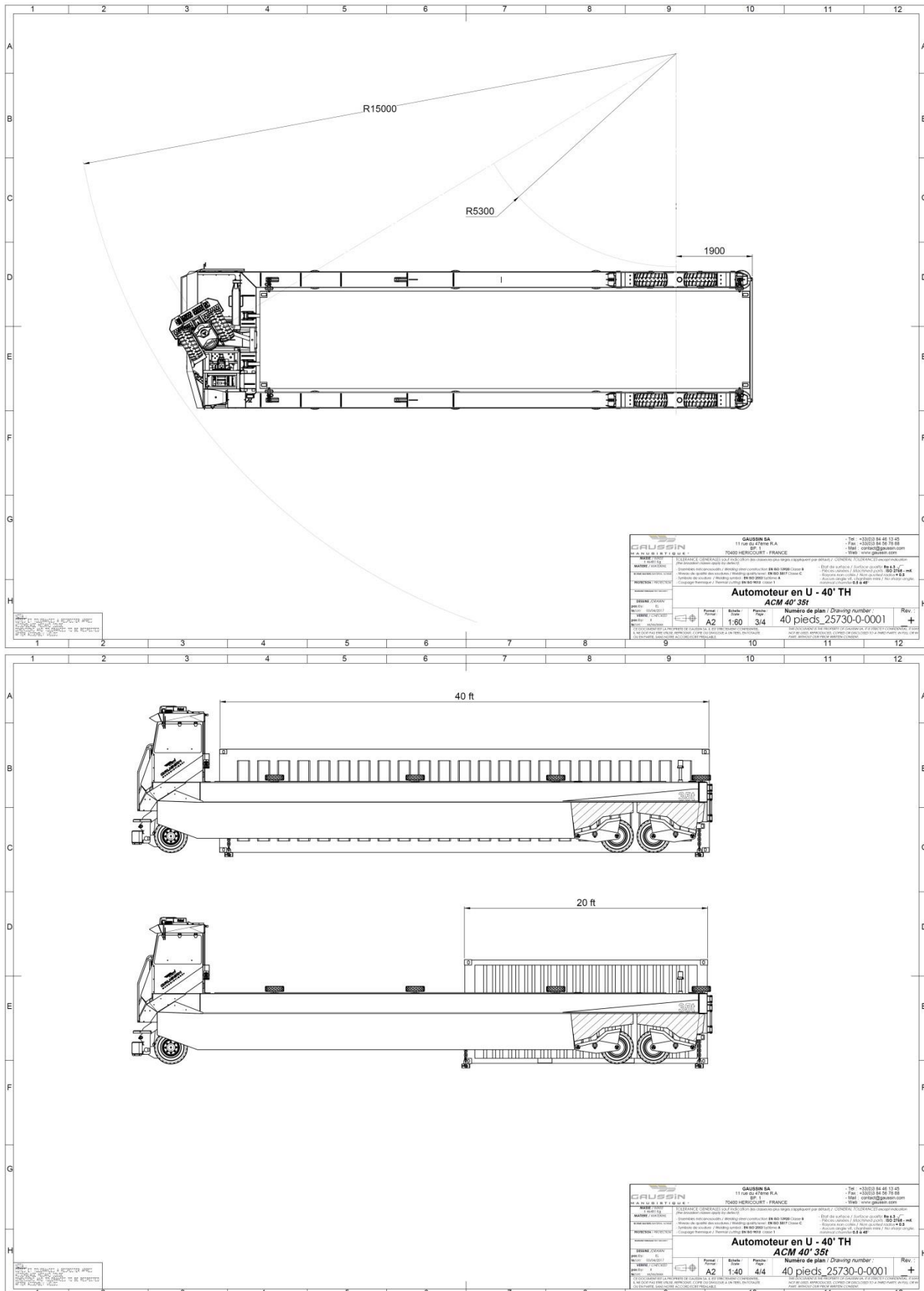
DRAWING



product please contact:

For any inquiry related to this

Mr Peter Doggett
Managing Director, Shad Group. U.K
Tel: +44 (0)1704 898900
e-mail: peter@shadgroup.co.uk
web: www.shadgroup.co.uk



contact:

For any inquiry related to this product please

Mr Peter Doggett
Managing Director, Shad Group. U.K
Tel: +44 (0)1704 898900
e-mail: peter@shadgroup.co.uk
web: www.shadgroup.co.uk

Container positioning views





product please contact:

For any inquiry related to this

Mr Peter Doggett
Managing Director, Shad Group. U.K
Tel: +44 (0)1704 898900
e-mail: peter@shadgroup.co.uk
web: www.shadgroup.co.uk

